

# Wedge Grip KC series

Wedge Grip for gripping samples firmly with self-tightening design

Allows to grip samples with a single action

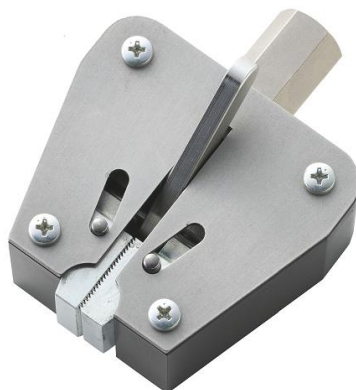
Designed to grip thin and deformable samples including wires and cables



KC-100



KC-1001






KC-5000






Testing Image  
(KC-100)



Testing Image  
(KC-5000)

Fixing jigs for testing (KC-100)		
Fix grip to the measuring shaft	Open the chuck with the lever	Push the lever down to grip samples
		

Fixing jigs for testing (KC-5000)		
Fix grip to the measuring shaft	Open the chuck with the lever	Push the lever up to grip samples
		


Specifications			
Model	KC-100 *1	KC-1001	KC-5000
Capacity	500N	1000N	5000N
Max. sample thickness	8mm	2mm	5mm
Jaw width	15mm	9.8mm	23.8mm
Throat depth	22mm	15mm	26mm
Dimension	See [Dimensions]		
Weight *2	Approx. 330g	Approx. 95g	Approx. 565g
Mounting screw	M6		M10
Mounting part type	Fixed	Switchable between Fixed and Swivel *3	
Mounting part angle		Approx. 13°	Approx. 10°

\* Not designed for slippery samples. Please contact us or authorized distributor for available samples.


\*1 Installation on a test stand is not recommended since the lever contacts the table.

\*2 Weight of the attachment is also applied as a load on the force gauge. Please check the weight when selecting the capacity of a force gauge.

\*3 The mounting type of older KC-1001 and KC-5000 is Swivel. Switching to Fixed is not possible.

Switchable mounting part between Fixed and Swivel (KC-1001, KC-5000)	
	<ul style="list-style-type: none"> <li>• The mounting part can be switched between Fixed and Swivel by tightening/loosening the screw.</li> <li>• The fixed neck prevents wobble when mounted on a vertical test stand and improves sample setting efficiency.</li> <li>• When mounted on a force gauge, swivel neck reduces damage to the sensor due to unbalanced load.</li> <li>• When measuring with a horizontal test stand, fixed neck is recommended for both the force gauge side and the test stand side.</li> </ul>

Example of Product Configuration KC-100	
<b>Configuration 1</b>	<b>Code : 1K2001A</b>
Basic tension (tensile) test for capacity up to 500N.	
Digital force gauge : DST-500N	
Manual test stand : HV-500NII	
Option attachment : KC-100	
Option attachment : GC-1100	
Example of Product Configuration KC-1001	
<b>Configuration 1</b>	<b>Code : 1K2002A</b>
Functional and advanced tension (tensile) test for capacity up to 1000N.	
Digital force gauge : ZTS-1000N	
Motorized test stand : MX2-1000N	
Option attachment : KC-1001 (2pcs)	
Option cable : CB-528	
Example of Product Configuration KC-5000	
<b>Configuration 1</b>	<b>Code : 1K2003A</b>
Functional and advanced tension (tensile) test for capacity up to 5000N.	
Digital force gauge : ZTS-5000N	
Motorized test stand : MX2-5000N	
Option attachment : KC-5000 (2pcs)	
Option cable : CB-528	






KC-1001  
Configuration 1 image

\*Refer to the specification of each product for details.

\*Product configuration varies depending on the shape and characteristic of the sample, and measurement conditions. Please contact us or authorized distributor for further details.

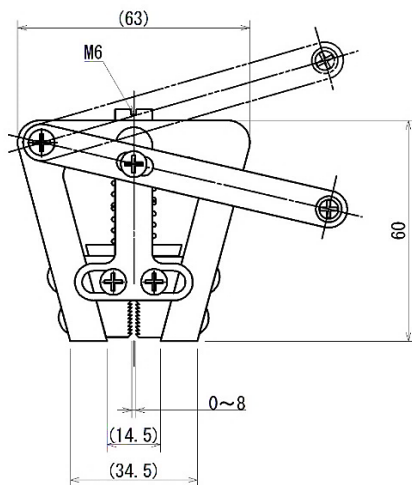
\*The recommended capacity of force gauge is different depending on the expected force to be loaded.

\*Longer stroke Test-stand required/suitable for samples with a high elongation rate. Please contact the authorized distributor or us for more information/concerns.

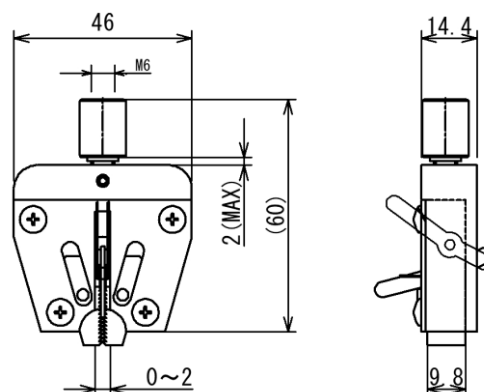
Related Products		
Flat chuck <b>GC-1100/1200/5000, GCF-1200</b>	Pantograph grip <b>PGC series</b>	Knurled Cam Grip <b>GP-15/30</b>
Allows to grip samples of various thickness.	Enables to grip easy to deform samples such as rubber and resin.	Enables to grip easy to deform samples such as resin. It reduces breakage of sample due to cam mechanism.
		

## [Dimensions]

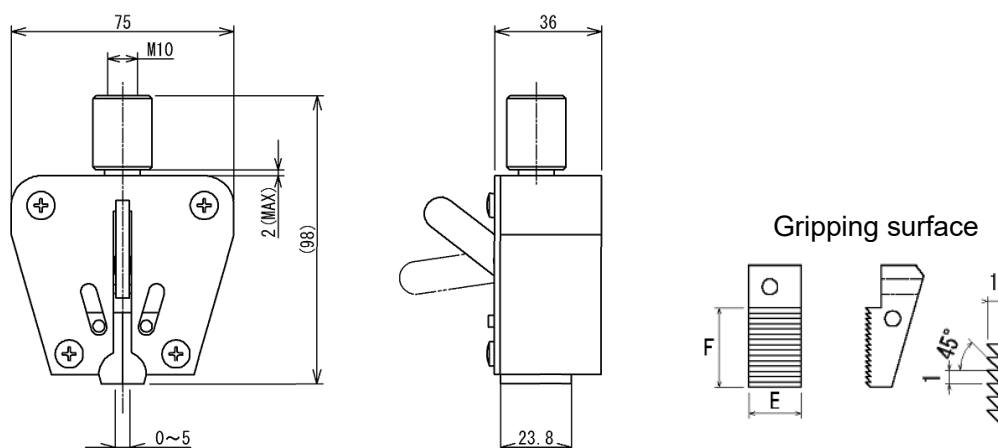
### KC-100



### KC-1001



### KC-5000



## [Cautions]

- Information in this document is subject to change without prior notice.
- This document is product descriptions and handling precautions, and do not guarantee various characteristics or safety.
- This product is designed for force measurement purpose only.
- Do not copy and use this content without authorization.
- A force gauge (sold separately) is required to use this product.
- Some samples may not be suitable to measure with this product.

SHRADDHA IMPEX  
Authorized Distributor

Email: shraddhaimpex@gmail.com / sales@shraddhaimpex.net  
Web: www.shraddhaimpex.net  
Contact: +919819530352 / +918591279918

