



# Graphing and Data Management Software

Force Recorder Next series  
Force Recorder series / ZLINK4  
Force Logger series

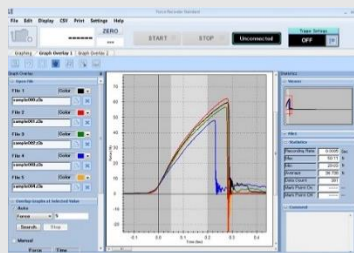
## Download Version Graphing Software



### Force Recorder Next Series

- Force/Torque - Time (displacement/angle) Graphing
- High-speed data transmission up to 2000 times/second
- Intuitive user interface
- Extensive preset functions
- Graph overlay: up to 10 Graphs
- Additional functions downloadable from the User Support site

## CD Version Graphing Software



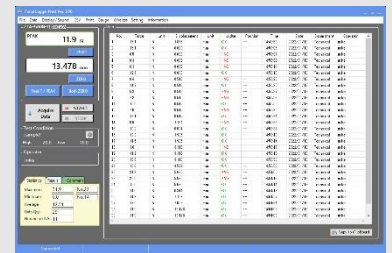
### Force Recorder Series

- Force/Torque - Time (displacement/angle) Graphing
- High-speed data transmission up to 2000 times/second
- Graph overlay: up to 5 Graphs  
*Force Recorder Plus :10 graph overlays*
- PC installation enable without Internet

### ZLINK4

- DST/DSV series dedicated software, enable graphing for Force - Time

## Data Acquisition and Management Software

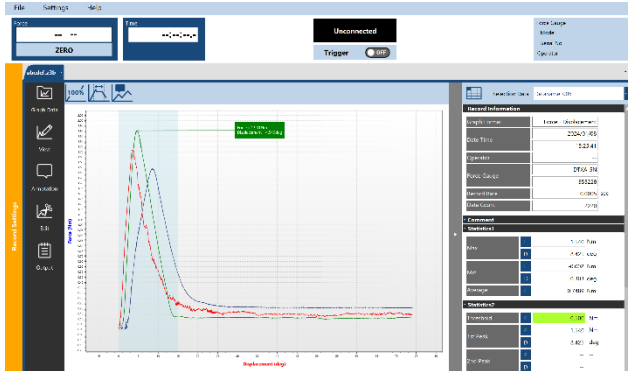


### Force Logger Series

- For peak-value and continuous data imports from the measurement devices to PC
- Displays a list of imported measurement values, pass/fail judgements, and statistics

# Force Recorder Next Series

- Downloadable graphing software that evolves with downloadable additional functions.
- Enhances the basic functions of the Force Recorder series, such as various preset functions.
- Supports highly accurate and precise graphing drawing for efficient data analysis.



## Force Recorder Next Professional

The Software enables the relationship analysis of force-displacement (torque-angle) in addition to force-time (torque-time).



## Force Recorder Next Standard

The Software enables force-time (torque-time) graphing and relevant analysis.

## Force Recorder Next Series: Common Functions

- Enable the reflection of sudden / minor data changes with high-speed data communication at 2000 times/sec.
- A wide variety of preset functions enable the creation and viewing of graphs for efficient data analysis.
- Statistical values are automatically calculated such as peak and average values.
- Displays a maximum of 10 graphs overlaid with the reference graph.
- Simple icon layouts support spontaneous operations.
- Enable setting the Administrative Privilege Settings for each user.
- Additional functions can be downloaded from IMADA Connected to meet individual requirements.



IMADA Connected is our online user-support site for IMADA customers; product registration enables online software updates, additional function download and manual download services. etc. *(some at cost)*

IMADA Connected  
<https://www.imada-connected.com/>

- For the Force Recorder Next series download, you must register an account with the eligible product and purchase the download card.

# Force Recorder Next series

## Additional Function Downloads\*1

COF

Automatically calculate the coefficient of friction from the measurement value  
Supports Measurement Standards Compliance

Peel

Automatically converts measurement result into peel force units  
Supports Measurement Standards Compliance

Chargeable\*2

### Friction Testing Module

Chargeable\*2

### Peel Testing Module 1

#### Feature 1 Automatic Calculation of Coefficient of Friction / Standards Compliance Judgment

Standard Conform	Standard Conform
<b>Standard Conform</b>	<b>Standard Non-Conform</b>
<b>COF Values</b>	<b>COF Values</b>
<b>OK</b>	<b>NG</b>
Sled Weight	200.000 g
Static COF	0.5608
Kinetic COF	0.3879

Automatically calculate and display the coefficients of static and kinetic friction coefficients from the measurement result by pre-setting the weight and calculation interval. It also displays the result of standards compliance judgment.

#### Feature 1 Automatic Conversion to Peel Force Units / Standards Compliance Judgment

Standard Conform	Standard Conform
<b>Standard Conform</b>	<b>Standard Non-Conform</b>
<b>Peel Force Values</b>	<b>Peel Force Values</b>
<b>OK</b>	<b>NG</b>
Sample Width	24.00 mm
Peel Max	0.49 N/10mm
Peel Min	0.38 N/10mm
Peel Ave	0.436 N/10mm

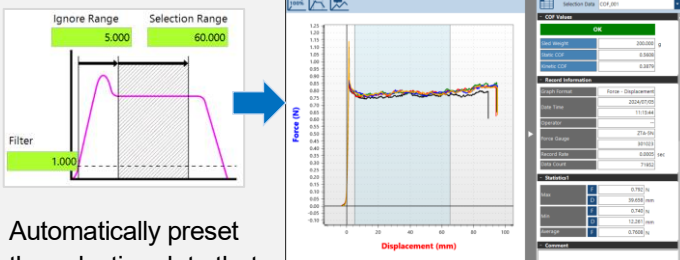
By pre-setting conditions such as sample width, conversion unit, and calculation interval, it automatically converts and displays the measurement results in the set peel units (Ex. N/10mm, etc.). It also displays the standard compliance judgment result.

#### Feature 2 Supports Measurement Compliant with Friction Test-Related Standards

Standard Template	Sled Weight	Graph Position Adjustment
ASTM D1894 (2014 Withdraw) -inch	200.000 g	ON
ASTM D1894 (2014 Withdraw) -mm		
ISO 8295 (1995)		
JIS K7125 (1999)		
JIS P8147 (2010)		
TAPPI T549 (2020) -inch		
TAPPI T549 (2020) -mm		
Report Information	Selection Data	
ON	Ignore Range	Selection Range
a) A description of the plastic sample, including the manufacturer's code, thickness, method of manufacture, tested surface, principal direction tested, and approximate age after manufacture	1.000	5.000
b) Description of the other material used		
c) Apparatus used		

▲ Supported standards (As of 2024.7)  
\*Supported standards vary by software

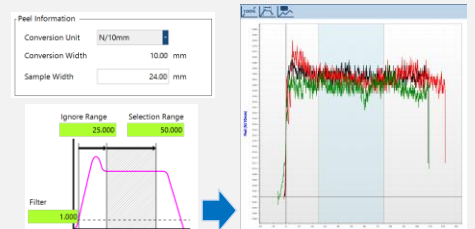
Measurement conditions that conform to JIS and other friction test-related standards are preset. It's easy for condition setting according to the standards. User preset function helps adding arbitrary standards and registering unique measurement conditions.



Automatically preset the selection data that necessary for calculating coefficients of kinetic friction according to the standards.

#### Feature 2 Supports Measurements Compliant with Peel Test-Related Standards

The Peel Testing module whose major feature is the same as the Friction Testing Module. But all supported standard and measurement conditions are peel test related.



90° Peel 180° Peel T-Peel

ASTM D3330/D3330M-04 (2018) -inch

ASTM D3330/D3330M-04 (2018) -mm

ASTM D6862-11 (2021) -inch

ASTM D6862-11 (2021) -mm

ISO 29862 (2018)

Japanese Pharmacopoeia (18th Edition)

JIS Z0237 (2022)

◀ Pre-setting measurement conditions that comply with relevant standards with 3 peel test methods: 90 degree, 180 degree, and T-peel test.

▼ Supported standards (As of 2024.7)

Peel Test Supported Standards	90°	180°	T-peel
ASTM D3330/D3330M-04 (2018)	✓	✓	-
ASTM D6862-11 (2021)	✓	✓	-
ISO 29862 (2018)	✓	✓	-
Japanese Pharmacopoeia (18th Edition)	✓	✓	-
JIS Z0237 (2022)	✓	✓	-
ASTM F88/F88M-23 (2023)	-	-	✓
ASTM D1876-08 (2023)	-	-	✓
ISO 11339 (2022)	-	-	✓
JIS K6854-3 (1999)	-	-	✓
JIS Z0238 (1998)	-	-	✓
JIS Z1707 (2019)	-	-	✓

\*Supported standards vary by software

As with the Friction Testing Module, users can also preset and register their own measurement conditions.

\*1 IMADA Connected has also released other features that can be added to the Force Recorder Next series.

Please visit IMADA Connected for the latest lineup.

\*2 Friction Testing Module and Peel Testing Module 1 is chargeable functions for Force Recorder Next series.

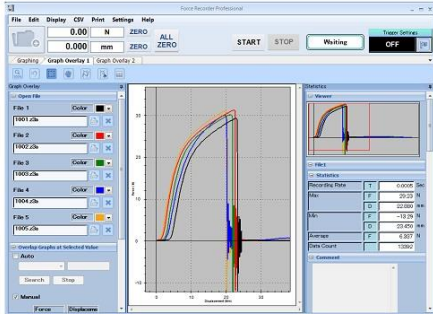
Purchase of a download card is required for the additional function downloads.

Force Recorder Next series software update may be required before installation of this function.

# Force Recorder Series

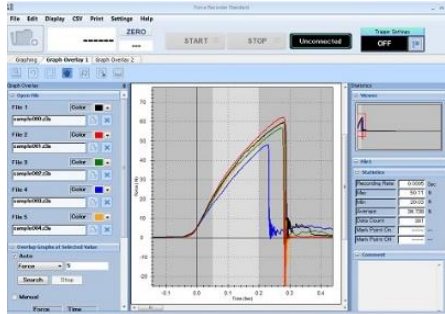
The CD version of Graphing Software enables installation on PCs without Internet access.

The accurate graphing of the measured values through high-speed data transmission of up to 2000 times/sec.



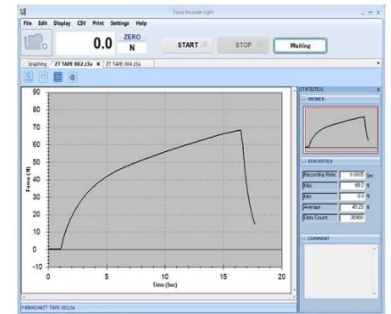
## Force Recorder Professional

The Software enables the relationship analysis of force-displacement (torque-angle) in addition to force/torque-time



## Force Recorder Standard

The Software enables force/torque-time graphing and relevant analysis



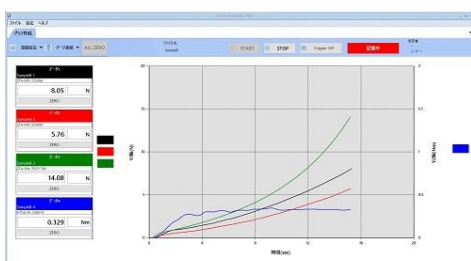
## Force Recorder Light

The Software limited to the relationship analysis of force/torque-time

## Force Recorder Professional/Standard: Common Functions

- Enable the reflection of sudden / minor data changes with high-speed data communication at 2000 times/sec. \*
- Automatically calculate statistical values such as peak and average values. \*
- Displays up to 5 graphs.
- Useful functions for reporting are available, including data output function in Word/Excel/PDF format. \*
- The measurement condition settings with the trigger functions enable the recording with automatic start/end settings.

Asterisk mark(\*) indicates the common function with the Force Recorder Light

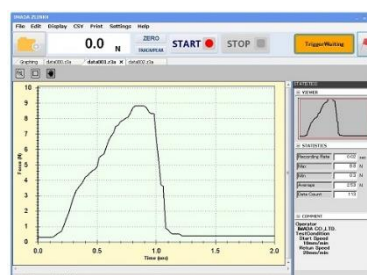


## Force Recorder Plus

The Software enables the graphing of up to 4 force/torque gauges simultaneously. Possible to overlay graphs with different units, such as force (N) and torque (N-m) values. Up to 10 graphs can be displayed on one screen.

## ZLINK4

Force-Time Graphing software for the Digital Force Gauge DST/DSV Series. Creates real-time graph at a 50Hz data communication speed.



## ZLINK4 Compatible Models



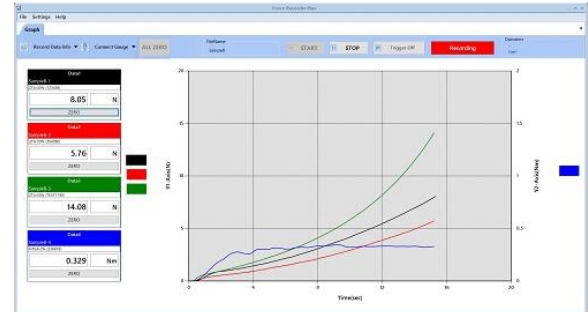
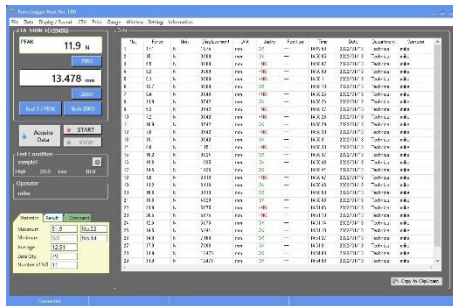
DST/DSV



# Force Logger Series

Data acquisition software to capture and manage data on force/torque gauges on a PC.

It is possible to display a pass / fail judgment based on the comparator settings of the measuring instrument, statistical values such as the maximum, minimum, and average values.



## Force Logger Next (Downloadable Version) Force Logger (CD Version)

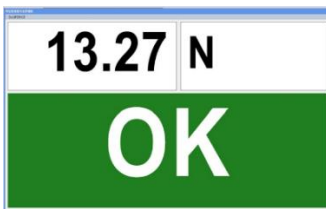
Free software available with the purchase of a specific product. The downloadable version of Force Logger Next enables additional function download from the user support site.

## Force Logger Plus

CD version software enables data acquisition from up to 4 force/torque gauges. With a single click from the software side, data can be captured from 4 gauges simultaneously, improving data import and management efficiency.

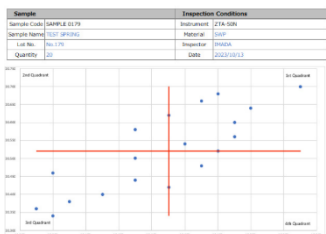
### Force Logger Next Additional Function introduction

#### ● Judgment Result display enlargement



▲ A function enlarges and displays the measured values and pass/fail judgments to view the data clearly with a dedicated window.

#### ● Excel Writing + Various Templates



▲ This function automatically writes imported data into an Excel sheet. Combined with templates, scatter plots, and histograms can be automatically created.

### Force Logger Series Compatible Models



ZTS/ZTA



eZT



DST/DSV



FA Plus



HTGS/HTGA



DTXS/DTXA

\* Product registration to IMADA Connected is required before downloading Force Logger Next. Only the Next Series products with version 5.00 or later (version 1.02 or later for DST/DSV) can be registered. After downloading the Software, products under version 5.00 can also be used.

\* ACT-1000N is compatible with only the data acquisition software ACT-Logger which is the accessory of the product. For more information, please refer to the ACT-1000N

© For details of each product, please refer to the specifications of each product. Specifications are available on each product page of our products and services website (QR code on the right).



SHRADDHA IMPEX  
Authorized Distributor

Email: shraddhaimpex@gmail.com / sales@shraddhaimpex.net  
Web: www.shraddhaimpex.net  
Contact: +919819530352 / +918591279918



MEMO