

SH-14F

IMADA-SS UNIVERSAL TESTING MACHINE

This is the horizontal tensile compression testing machine with the maximum load of 500N. It is applied when the test method is from the side direction or the sample is loaded from the side.

* Design, appearance and specifications may be changed for modifications or improvements without any prior notice.

Manufacturer



91-1 Hashira 6 bancho, Toyohashi,
Aichi Japan, 441-8058
PHONE.+81 532 45 8851
FAX. +81 532 46 6231
E-mail: info@imada-ss.co.jp
<http://www.imada-ss.co.jp>

Agency



GALA NO.122, KEYTUO INDUSTRIAL ESTATE,
KONDIVITA VILLAGE ROAD,
M.I.D.C, ANDHERI (EAST)
MUMBAI : 400059
Phone: 022-49711705 / 022-49711719.
Mobile: +91-9892404060 /+91-9004104401
Website: www.shraddhaimpex.net

CAT-SH-14F_2202E

IMADA-SS UNIVERSAL TESTING MACHINE

SH-14F

SH-14F type is the horizontal and desktop type testing machine, which allows measuring up to 500N maximum load.

Characteristics

- It is horizontal testing machine and can be placed on the desk in compact size.

Usage example

- Peeling tests of semiconductor.
- Frictional force tests.

※When the jig is attached, it will be vertical to the loadcell. Therefore, a moment force is generated.

Accessories / Option

● Output of ANALOG

Option to output load and displacement values at 10V/FS for connection to analog equipment.

● Software



Standard specifications

Model	SH-14F-□ (※1)
Maximum load	500N
Minimum Unit	[Combination of Load Range according to the model] /
Load Display	[Specifications of Load Range] Reference
Load Precision	JIS 1 class (Indication value ±1% range)
Displacement Minimum Unit	0.01mm
Drive type	Brush-less Motor
Speed Range	5~500mm/min
Stroke	200mm
Table size	100×100mm
Safety Device	Optional setting Upper and Lower Limit
Basic Function	Over-load Prevention function
	Memory function of the test conditions
	Peak Hold function
	Cycle mode function
	Detect function of Break Point
	Detect function of Start Point
	Auto Feed function
Auto Start Point Return function	
Judgment function	
Output (※2)	USB
Power supply	AC100V 5A
Weight	Approx. 25kg
Size	W728×D240×H252mm(Included of LCD)

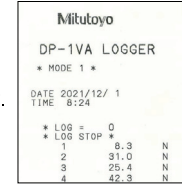
(※1) The model symbol is put in □. Refer to [Combination of Load Range according to the model].

(※2) Analog output and Printer output can be installed with option.

Accessories / Option

Digital printer DP-1VA (Option)

※To use this, it is necessary to install the 'Printer output'.



Model	DP-1VA
Printing style	Thermal line dot
Communication	Digimatic output terminal
Paper	No.09EAA082(58X)
Power supply	AC100V (DC Adapter)
Weight	Approx. 390g
Size	W94×D201×H75mm
Accessories	DC Adapter/Paper 1role/Cable C-201

Transformer (Option)

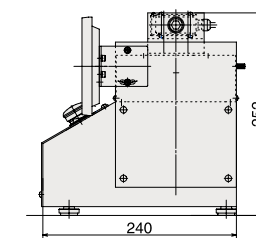
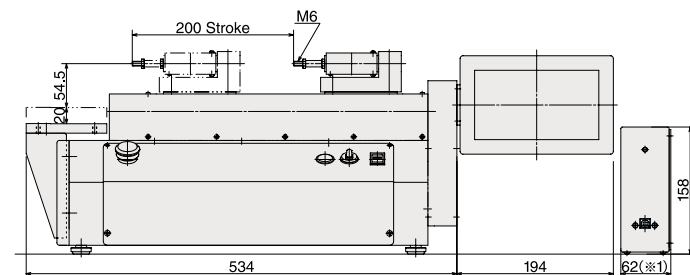
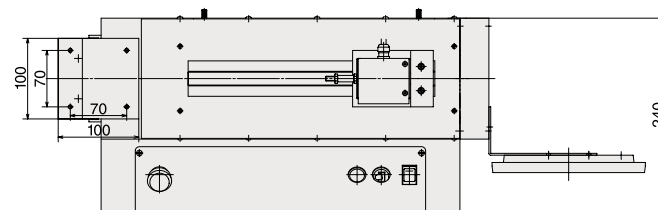
※For overseas use, it is necessary to transform the local voltage to 100V.



Model	Input	Output	Max. current	weight
CD110-06S	110V	100V	6A	2.3kg
CD120-06S	115~120V			2.3kg
CD220-06S2	220V			5.1kg
CD240-06S2	230~240V			5.1kg

Combination of Load Range according to the model

Model	Usable Range	Setting Load Range							
		500N	200N	100N	50N	20N	10N	5N	2N
SH-14F-50R1	100N ~ 500N	●	—	—	—	—	—	—	—
SH-14F-50R2	20N ~ 500N	●	—	●	—	—	—	—	—
SH-14F-50R3	4N ~ 500N	●	—	●	—	●	—	—	—
SH-14F-20R1	40N ~ 200N	—	●	—	—	—	—	—	—
SH-14F-20R2	10N ~ 200N	—	●	—	●	—	—	—	—
SH-14F-20R3	2N ~ 200N	—	●	—	●	—	●	—	—
SH-14F-5R1	10N ~ 50N	—	—	—	●	—	—	—	—
SH-14F-5R2	2N ~ 50N	—	—	—	●	—	●	—	—
SH-14F-5R3	0.4N ~ 50N	—	—	—	●	—	●	—	●
SH-14F-2R1	4N ~ 20N	—	—	—	—	●	—	—	—
SH-14F-2R2	1N ~ 20N	—	—	—	—	●	—	●	—



Specifications of Load Range

Load Range	Maximum Load Display	Minimum Unit
500N	500.0N	0.1N
200N	200.0N	
100N	100.00N	0.01N
50N	50.00N	
20N	20.00N	
10N	10.000N	0.001N
5N	5.000N	
2N	2.000N	

※The usable range is recommended at 20~100% of each setting Load Range.

(※1) For options and custom orders, Model SL-6003 measurement amplifier is 'Type B' with the width of 88mm.