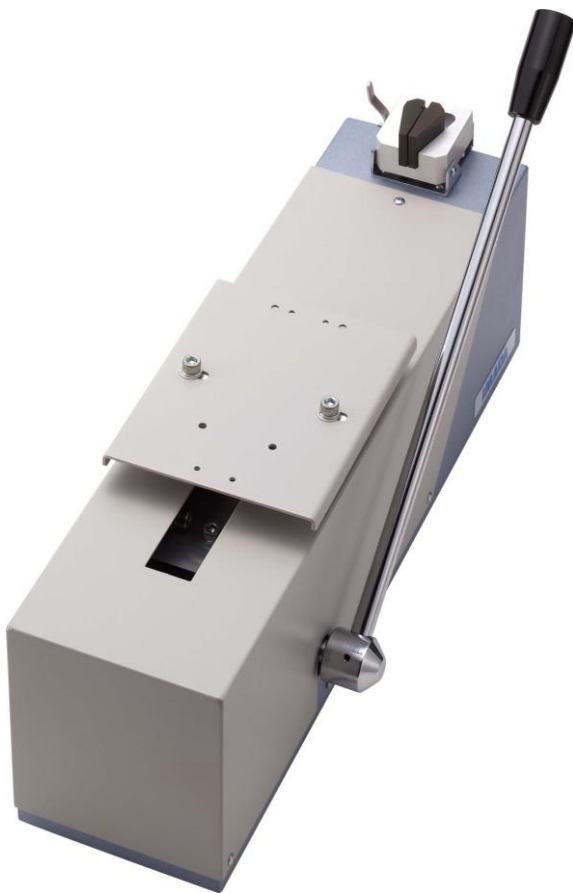







# Lever Operation Stand for Crimp Test LH-500N

Designed for tensile strength test of crimped terminal  
High measurement efficiency due to simple lever operation  
Easy one-touch operation to grip a sample  
Supplied fixing bracket secures the tester on table for stable measurement



Supplied Attachments	
Wire clamp jig CW-500N	Terminal clamp jig CH-500N
	

Procedure of Measurement		
Insert the terminal to the jig.	Grip the wire part.	Simply pull up the lever to complete the test.
		

Specifications	
Model	LH-500N
Capacity	500 N
Stroke	Approx. 85 mm
Dimensions	See [Dimensions]
Weight	Approx. 10.5kg
Accessories	Wire clamp Fixture: CW-500N、 Terminal clamp fixture: CH-500N、 Fixing brackets

\*The force gauge is sold separately.

Specifications of supplied attachments		
Model	CW-500N	CH-500N
Capacity	500N	500N
Method of clamp	Wedge *1	Hook *2
Opening width	5mm	6mm
Dimensions	See [Dimensions]	See [Dimensions]
Weight	Approx. 220g	Approx. 210g

\*1 It is not suitable for slippery samples and hard samples such as quenched materials due to the wedge clamp method.  
It is possible to damage the covering part if the cable is coated with thin or soft materials.

\*2 It catches the sample between the jaws, not gripped.

It is not suitable for fixing of narrow terminals such as bar terminals.


Examples of Product Configuration	
<p><b>Example 1 (* 1)</b>                      <b>Code: 1L3001A</b></p> <p>Tensile strength test of crimped terminal up to 500N by combining mechanical force gage.</p> <p>Mechanical force gauge FB-500N Lever Operation Stand for Crimp Test: LH-500N</p>	
<p><b>Example 2</b>                              <b>Code: 1L3001B</b></p> <p>Tensile strength test of crimped terminal with high efficiency up to 500N by combining digital force gauge (equips internal memory and peak hold mode). It also enables data management by using software.</p> <p>Digital force gauge: DSV-500N Lever Operation Stand for Crimp Test: LH-500N</p>	




Image of Product Configuration Example 2

\* Refer to the specification of each product for details.

\* Product configuration varies depending on the shape and characteristic of the sample, and measurement conditions.




\* The recommended capacity of force gauge varies depending on the expected force to be loaded.

\*1 Mechanical force gauge may not capture the peak force value correctly when there is a large impulse at break.

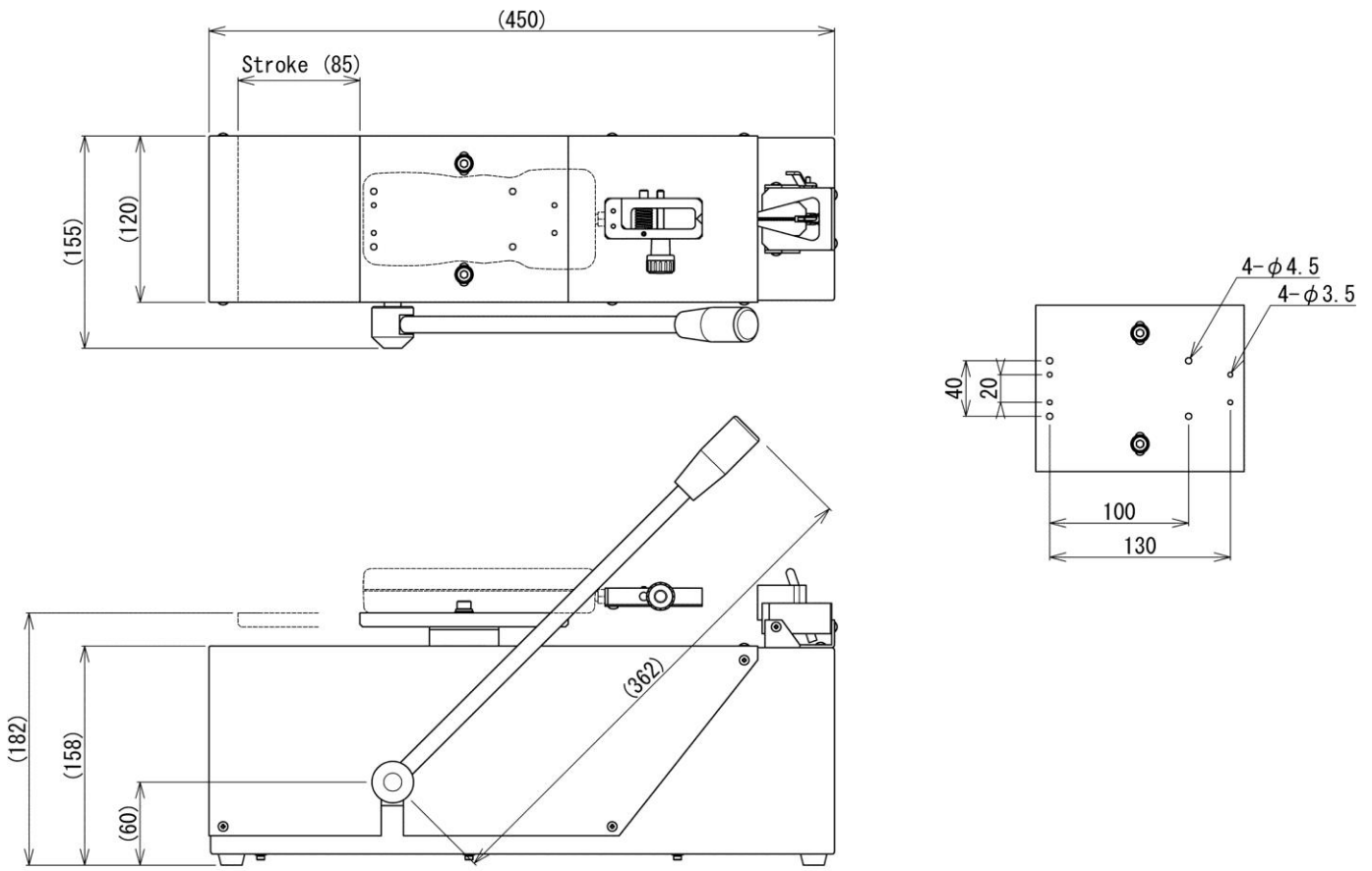
Mountable Force Gauges		
DST/DSV Series	ZTS/ZTA Series	FB/PS/PSM Series
Digital force gauge with excellent cost-performance capable to manage data with PC	Digital force gauge with high precision, featuring high sampling rate and a variety of useful functions	Mechanical force gauge for easy handling
		

\*Select suitable force gauge to correspond with the mounting screws M6.

\*Contact us for details if you need to install old models of force gauge.

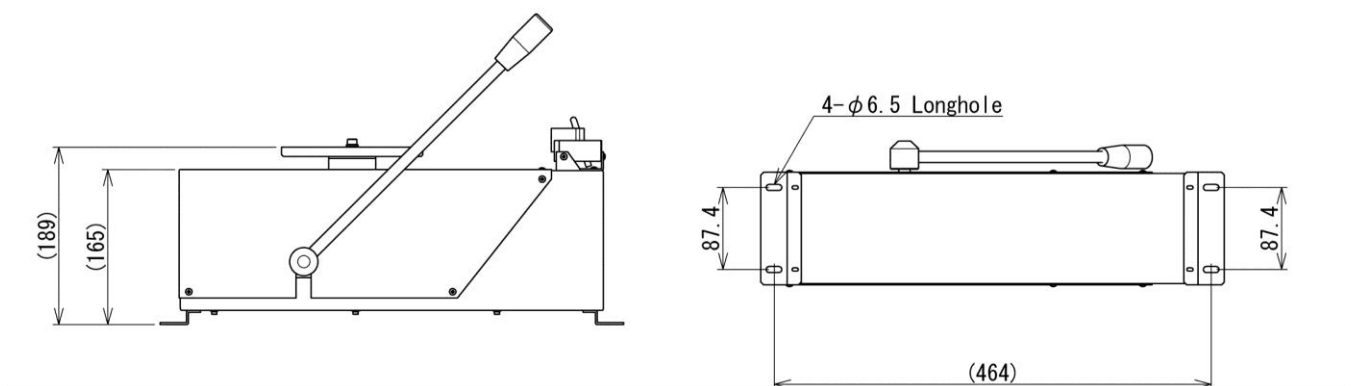
Related Applications		
Automatic crimp tester	For thick wires	For strength test of clamping band
Automatic crimp tester with PC data management up to 1000N	Suitable for thick wires with internal diameter of terminal hole up to 12mm	Applicable to measurement of tensile strength of binding band, partially in accordance with UL and SAE standards
		
Product Configuration ACT-1000N	Product Configuration ZTS-2500N / MX2-2500N / CH-5000N / CW-5000N / CB-518	Product Configuration ZTS-1000N / MX2-1000N / LOP-1000N / CB-518

**[Dimensions]**

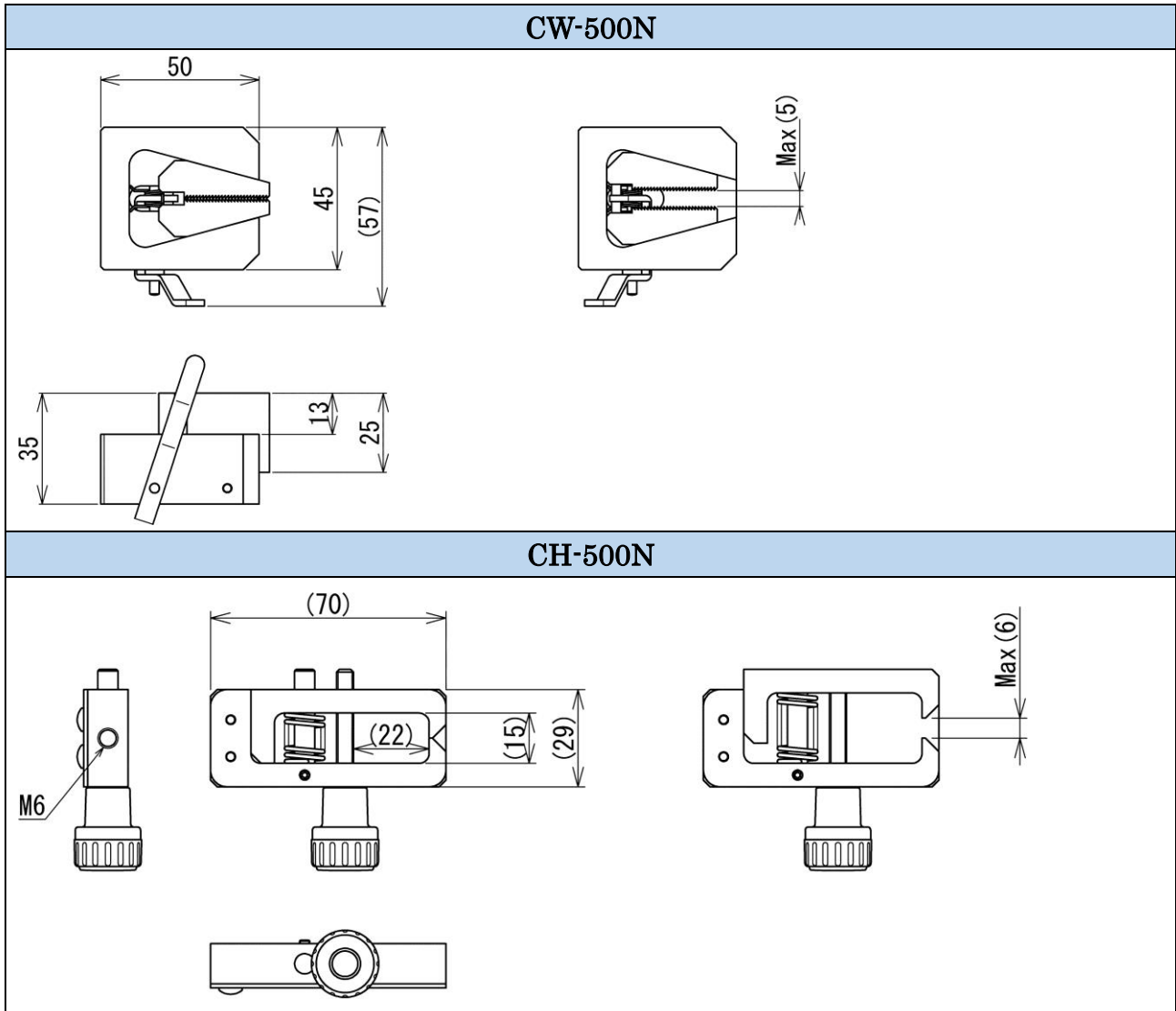


Unit: mm

**When Fixing Brackets is Combined**



Unit: mm



Unit: mm

**[Cautions]**

- Specifications are subject to change without prior notice.
- A force gauge (sold separately) is required to use this product.
- This product is designed for force testing only. Do not use it for any other purposes.
- Some samples may not be suitable to grip with this product.
- Do not copy and use this content without authorization.

SHRADDHA IMPEX  
 Authorized Distributor

Email: shraddhaimpex@gmail.com / sales@shraddhaimpex.net  
 Web: www.shraddhaimpex.net  
 Contact: +91 9819530352 / +91 8591279918