

## Attachments for DTXS/DTXA series

Enables to select from various attachments to suit for measurement samples

Various attachment to measure a wide range of samples.



Standard Table



Small Table





Light Weight Wide Table



Pin Chuck



### [Table Attachments]

#### Standard Table (Included in 2/5/10N-m range)

		Feature
		<p>Enables to fix PET bottles, cans, bins and so on.</p> <p>Capacity: 10N-m            Allowable sample diameter: <math>\phi</math> 20~160mm            Standard table weight: Approx.1.3kg            Standard table material: Steel and Aluminum            Standard pin weight: Approx.28g/pcs            Standard pin material: Stainless-steel and Urethane</p>

\*Above table and pins are included in DTXS-2/5/10N and DTXA-2/5/10N.

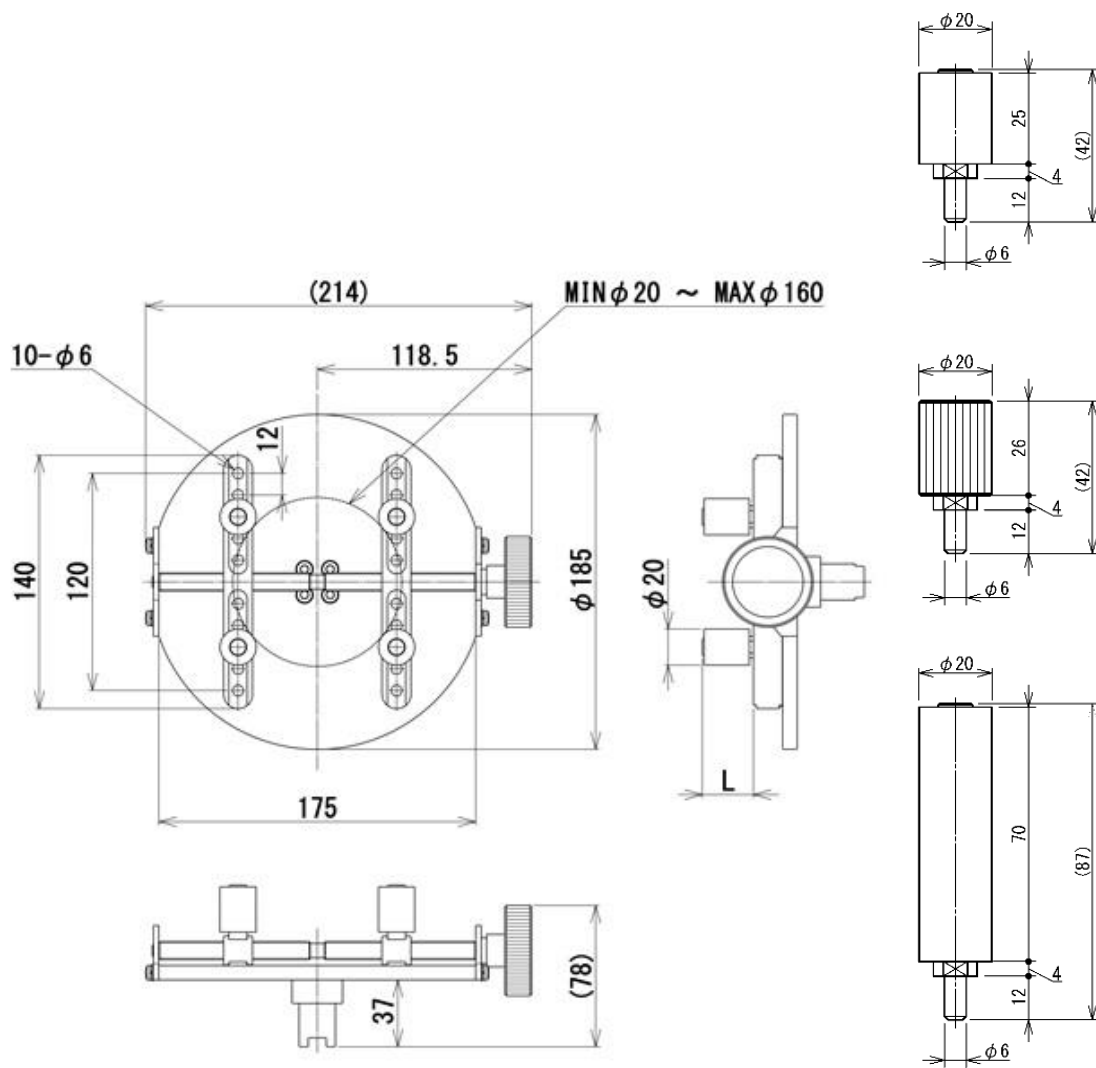
The following types of pins are available to suit the measurement samples.

	<p>Ideal for fixing slippery samples such as aluminum cans and plastic containers.</p> <p>Pin weight: Approx.69g/pcs            Pin material: Stainless-steel</p>		<p>Ideal for fixing tall samples such as circuit boards, camera lenses and liquor bottles.</p> <p>Pin weight: Approx.67g/pcs            Pin material: Stainless-steel and Urethan</p>
-------------------------------------------------------------------------------------	-----------------------------------------------------------------------------------------------------------------------------------------------------------------------	-------------------------------------------------------------------------------------	-------------------------------------------------------------------------------------------------------------------------------------------------------------------------------------------

**[Product Models]**





Set	Pin	Model
DTXS/A series+ Standard Table + Pins	Standard Pin	DTXS-2/5/10N DTXA-2/5/10N
	Notch Pin	DTXS-2/5/10N-TB-01 DTXA-2/5/10N-TB-01
	Long Clamp Pin	DTXS-2/5/10N-TB-02 DTXA-2/5/10N-TB-02
Standard Table + Pins	Standard Pin	DT-TB
	Notch Pin	DT-TB-01
	Long Clamp Pin	DT-TB-02
Pins	Standard Pin	TB-P
	Notch Pin	TB-01P
	Long Clamp Pin	TB-02P

**[Dimensions]**



Unit: mm

**Small Table (For 2/5N-m range)**

Table	Pin	Feature
 <p>Small Table</p> <p>Capacity: 5N-m            Allowable Sample Diameter:  <math>\phi 7 \sim 50\text{mm}</math>            Weight: Approx.370g            Material: Steel and Aluminum</p>	 <p>Standard Pin</p>	Suitable for measuring small samples such as eye drop lids. Pin weight: Approx.3g/pcs Pin material: Aluminum and Urethan
	 <p>Notch Pin</p>	Ideal for firmly fixing samples such as connectors made of resin. Pin weight: Approx.10g/pcs Pin material: Stainless-steel
	 <p>Long Clamp Pin</p>	Ideal for fixing slim samples such as cosmetic containers. Pin weight: Approx.8g/pcs Pin material: Aluminum and Urethan

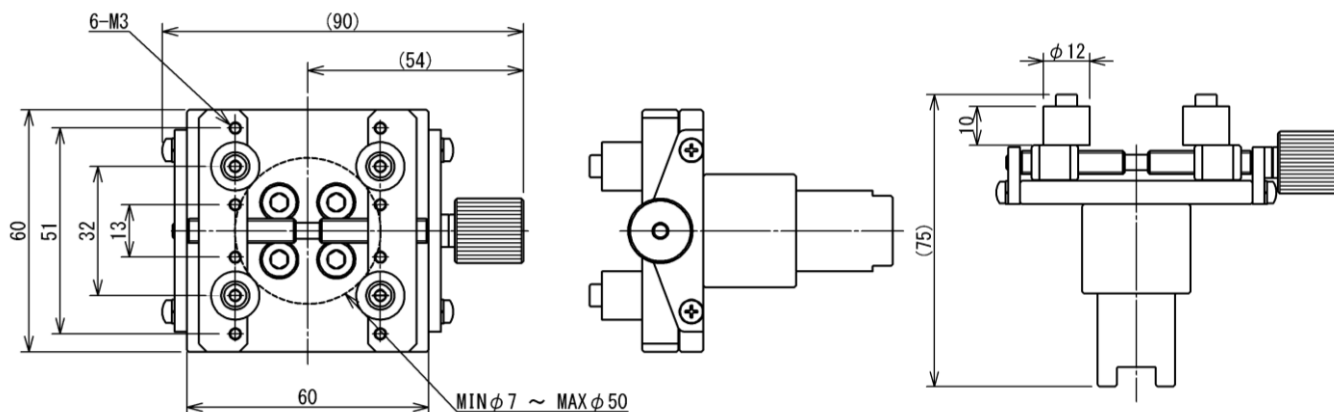
\* Small table and pins cannot be used for 0.5N-m range.

**[Product Models]**

Set	Pin	Model
DTXS/A series+ Small Table + Pins	Standard Pin	DTXS-2/5N-ST DTXA-2/5N-ST
	Notch Pin	DTXS-2/5N-ST-01 DTXA-2/5N-ST-01
	Long Clamp Pin	DTXS-2/5N-ST-02 DTXA-2/5N-ST-02
Small Table + Pins	Standard Pin	DT-ST
	Notch Pin	DT-ST-01
	Long Clamp Pin	DT-ST-02
Pins	Standard Pin	ST-P
	Notch Pin	ST-01P
	Long Clamp Pin	ST-02P

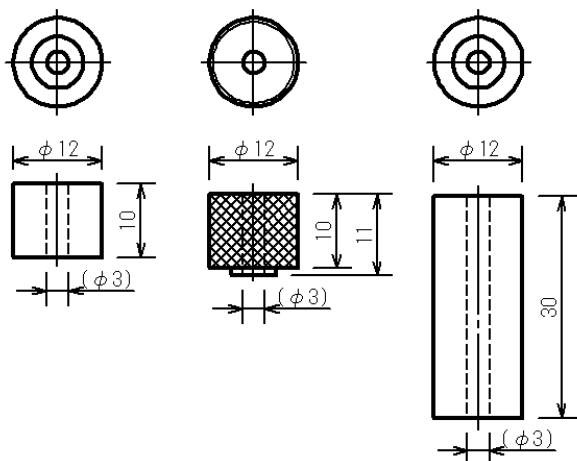
\* 4 pins as a set is sold.

**[Dimensions]**











Unit: mm

Pins



Unit: mm

**Light Weight Small Table (For 0.5/2N-m range)**

Table	Pin	Feature
 Light Weight Small Table  Capacity: 2N-m Allowable Sample Diameter: $\phi 7 \sim 50\text{mm}$ Weight: Approx.170g Material: Aluminum	 Standard Pin	Suitable for measuring small samples such as plastic tubes.  Pin weight: Approx.3g/pcs Pin material: Aluminum and Urethan
	 Notch Pin	Ideal for firmly fixing samples such as small motors.  Pin weight: Approx.10g/pcs Pin material: Stainless-steel
	 Long Clamp Pin	Ideal for fixing slim samples such as cosmetic containers.  Pin weight: Approx.8g/pcs Pin material: Aluminum and Urethan
 Light Weight Wide Table  Capacity: 2N-m Allowable Sample Diameter: $\phi 10 \sim 100\text{mm}$ Weight: Approx.220g Material: Aluminum	 Standard Pin	Suitable for measuring samples such as volume dials.  Pin weight: Approx.3g/pcs Pin material: Aluminum and Urethan
	 Notch Pin	Ideal for firmly fixing samples such as motors.  Pin weight: Approx.10g/pcs Pin material: Stainless-steel
	 Long Clamp Pin	Ideal for fixing long and wide samples such as bottle shaped containers and diapers.  Pin weight: Approx.8g/pcs Pin material: Aluminum and Urethan

**[Product Models]**

Set	Pin	Model
Light Weight Small Table + Pin	Standard Pin	DT-STL
	Notch Pin	DT-STL-01
	Long Clamp Pin	DT-STL-02
Light Weight Wide Table + Pin	Standard Pin	DT-STLW
	Notch Pin	DT-STLW-01
	Long Clamp Pin	DT-STLW-02
Pin (*1)	Standard Pin	ST-P
	Notch Pin	ST-01P
	Long Clamp Pin	ST-02P

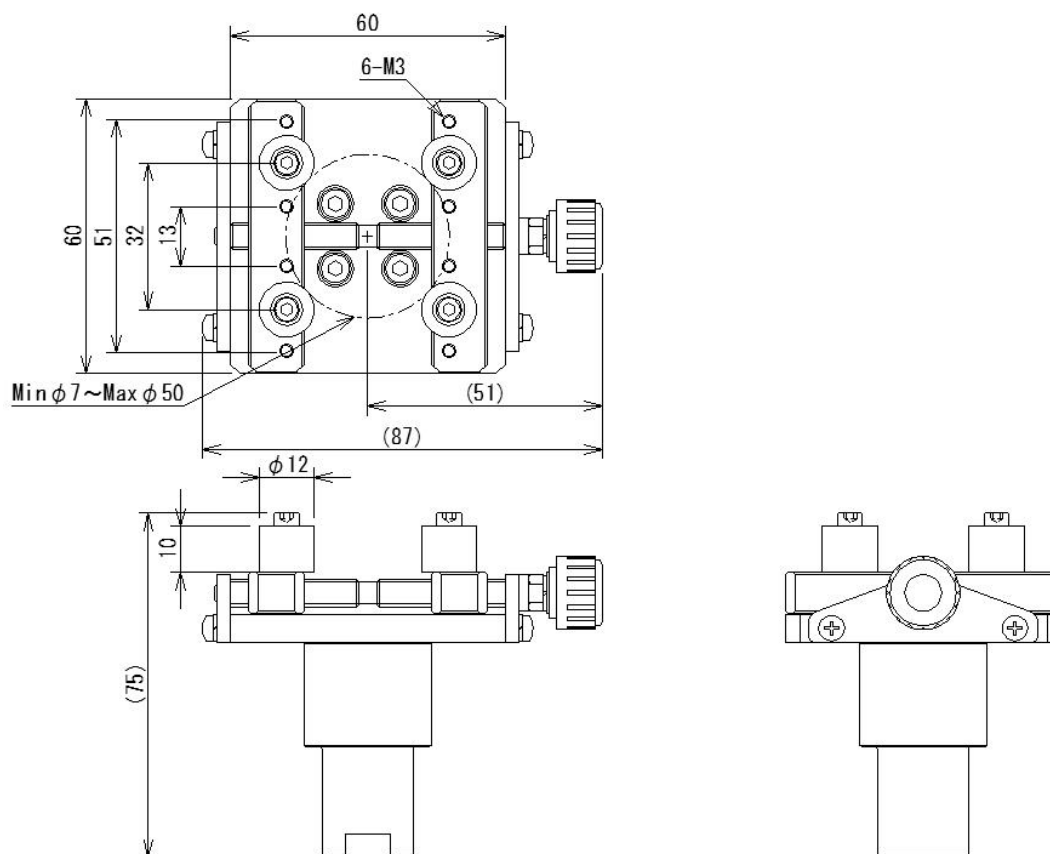
\* DTXS/A-0.5N-Z is only available. Please select from the no table model and tables respectively.

\* 4 pins as a set is sold.

\*1 The pins of the light weight table is the same as the pins of the small table (P3).

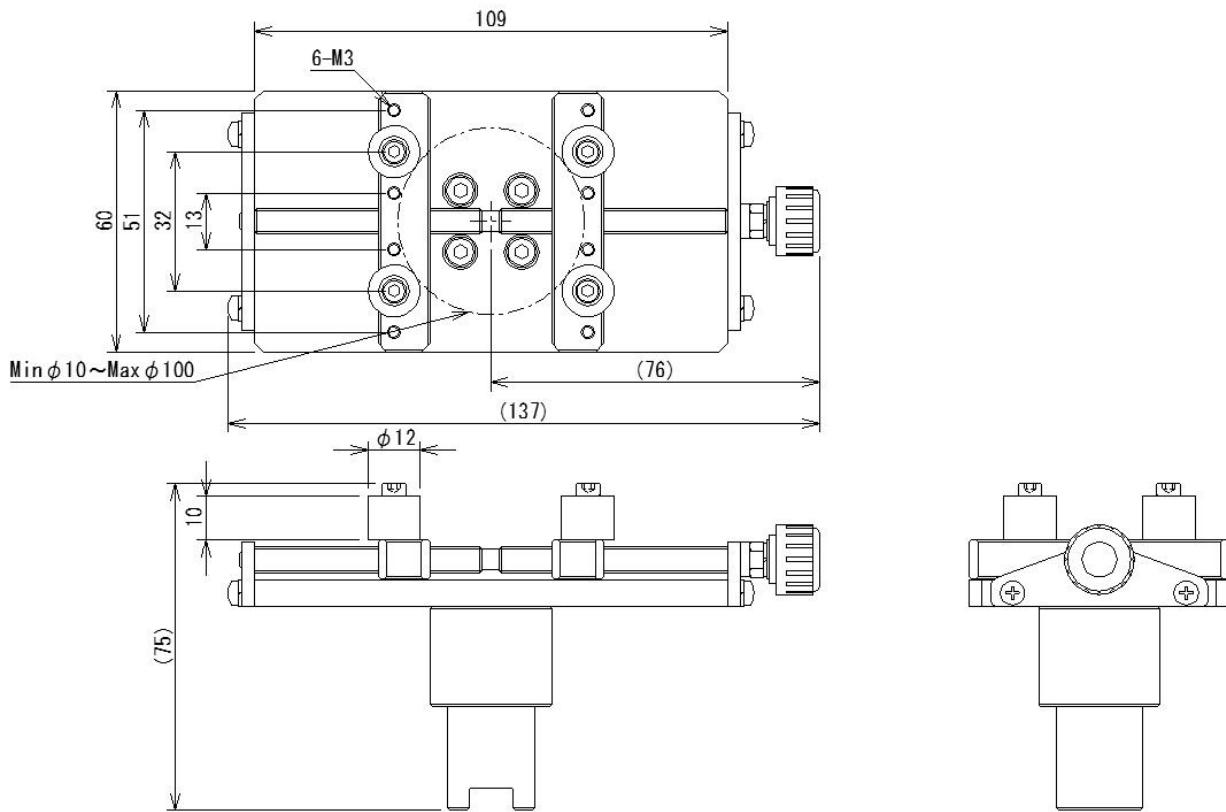
**[Dimensions]**

**DT-STL**




Unit: mm

DT-STLW



Unit: mm

### Pin Chuck

	Feature
	The three claws clamp samples such as wire and round-bar samples.

### [Specifications]

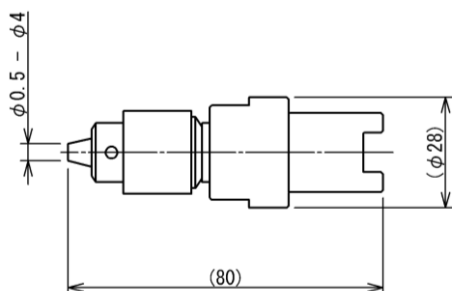
Model	DT-DC-4	DT-DC-6.5	DT-DC-6.5SUS(*1)	DT-DC-13
Maximum torque	5N-m	10N-m	10N-m	10N-m
Opening width	φ0.5~4mm	φ0.5~6.5mm	φ0.5~6.5mm	φ1.2~13mm
Weight	Approx.190g	Approx.290g	Approx.290g	Approx.670g
Material	Steel	Steel	Stainless-steel	Steel

\* Pin chuck cannot be used for DTXA/DTXS-0.5N.

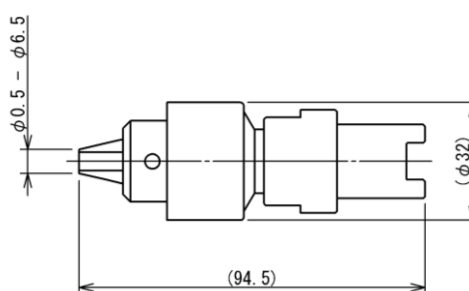
\*1 We recommend using the stainless-steel chuck under the circumstance making metal rust.

### [Dimensions]

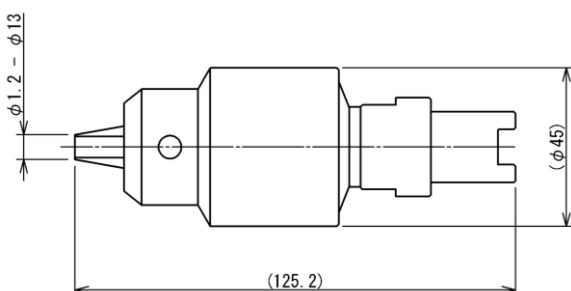
DT-DC-4



DT-DC-6.5/ DT-DC-6.5SUS




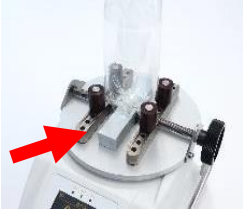
DT-DC-13



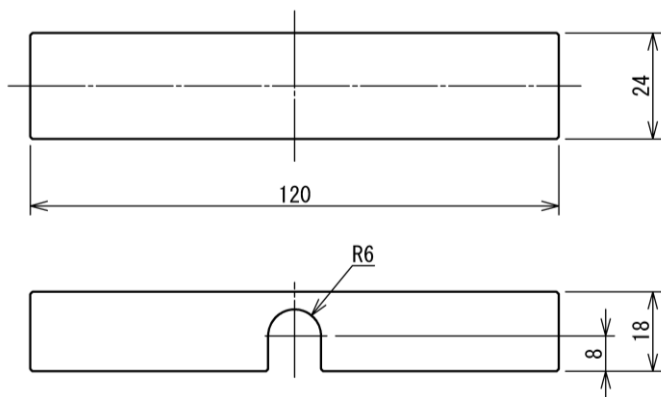
Unit: mm

**[Other Attachment]**

**Sample Stage (for standard table of DTXS/A series)**

	Feature
	<p>The stage making samples stable.</p> <p>Model: TB-SP            Weight: Approx.130g            Material: Aluminum</p>  <p>Setting image</p>

**[Dimensions]**



Unit: mm

**[Cautions]**

- Information in this document is subject to change without prior notice.
- This document is product descriptions and handling precautions, and do not guarantee various characteristics or safety.
- This product is designed for force measurement purpose only.
- Do not copy and use this content without authorization.
- Some samples may not be suitable to measure with this product.

SHRADDHA IMPEX  
 Authorized Distributor

Email: shraddhaimpex@gmail.com / sales@shraddhaimpex.net  
 Web: www.shraddhaimpex.net  
 Contact: +91 9849530352 / +91 8594279918