

Long Stroke Type Manual Test Stand HV series

Ideal for measurement of larger or extensible samples due to the longer stroke
 Allows stable measurement due to the handle operation





HV-500N II



HV-1000N




| Feature 1 | Feature 2 | Feature 3 |
|--|--|--|
| Fine Movement | Various testing applications | Various options available |
| Allows fine adjustment of a force gauge's position and stable testing by the handle operation. | <ul style="list-style-type: none"> -Material strength tests (tensile, compress, shear strength, etc.) -Evaluation tests of mechanical and electronic parts (soldering strength of QFP, tensile strength of crimp terminal, etc.) -Peeling tests of adhesive part and heat seals | Various options are available such as length scale and long stroke for a wide range of measurement needs. *HV-3000N only have length scale option (-S). |

| Main options | |
|---|---|
| Long stroke (-L) *1 | Length meter (-S) |
| This option provides extended stroke. Useful when testing stretching samples or testing for long distance. | Built in digital screen indicates travel distance of force gauge. |
|  |  |

*1 HV-3000N is not available.

| Specifications | | | |
|--------------------|--|--|------------------|
| Model | HV-500N II | HV-1000N | HV-3000N |
| Capacity | 500N | 1000N | 3000N |
| Loading Method | Trapezoidal screw with 3mm lead | Ball screw with 4mm lead | |
| Travel Rate | 2mm/1 turn | 1.2mm/1 turn | 0.6mm/1 turn |
| Max. Sample Height | Approx. 240mm | Approx. 375mm | Approx. 415mm |
| Table Material | Stainless Steel | Steel | Steel |
| Weight | Approx. 10kg | Approx. 18kg | Approx. 24kg |
| Dimensions | See [Dimensions] | | |
| Accessories | Operation manual, tools | | |
| | GF-1 (Grip mounting adapter) | GF-2 (Grip mounting adapter) | |
| Available Options | -L: Extended stroke by 200mm -S: Length scale | -L: Extended stroke by 150mm -S: Length scale | -S: Length scale |

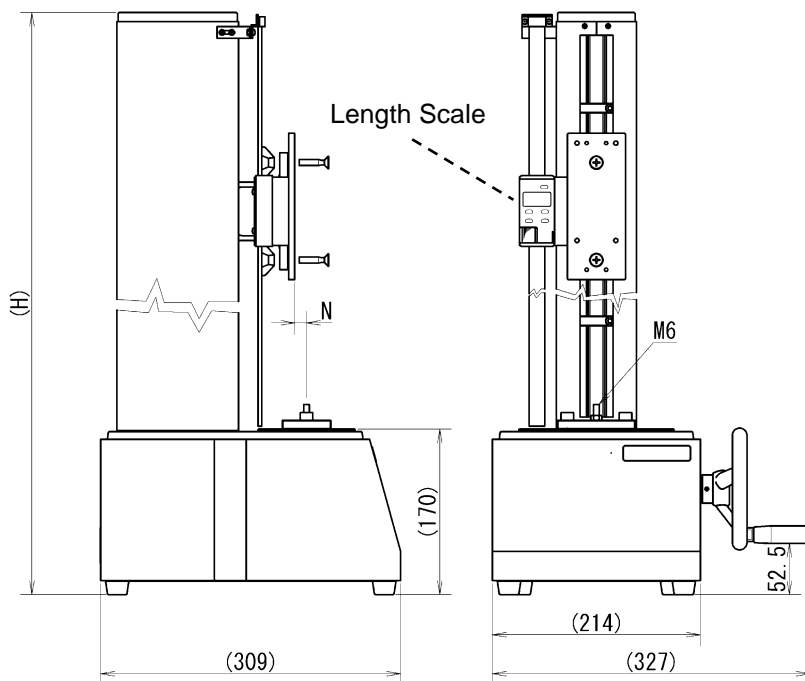
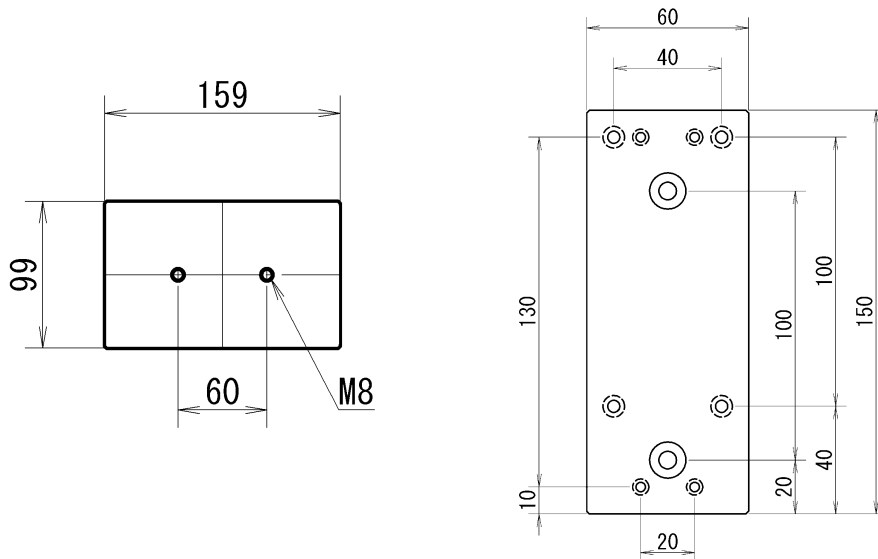
* The Max. Sample Height refers to the distance between the test stand table and the tip of force gauge (1000N or less of ZT series) measuring shaft when the head is at the top.

| Mountable Force Gauges for HV series | | |
|---|--|---|
| DST/DSV series | ZTS/ZTA series | FB/PS/PSM series |
| Digital force gauge with excellent cost performance capable to manage data with PC. | Digital force gauge with high precision, featuring high sampling rate and a variety of useful functions. | Mechanical force gauge for easy handling. |
|  |  |  |

[Dimensions]

HV-500N II

Mounting Plate for Force Gauge

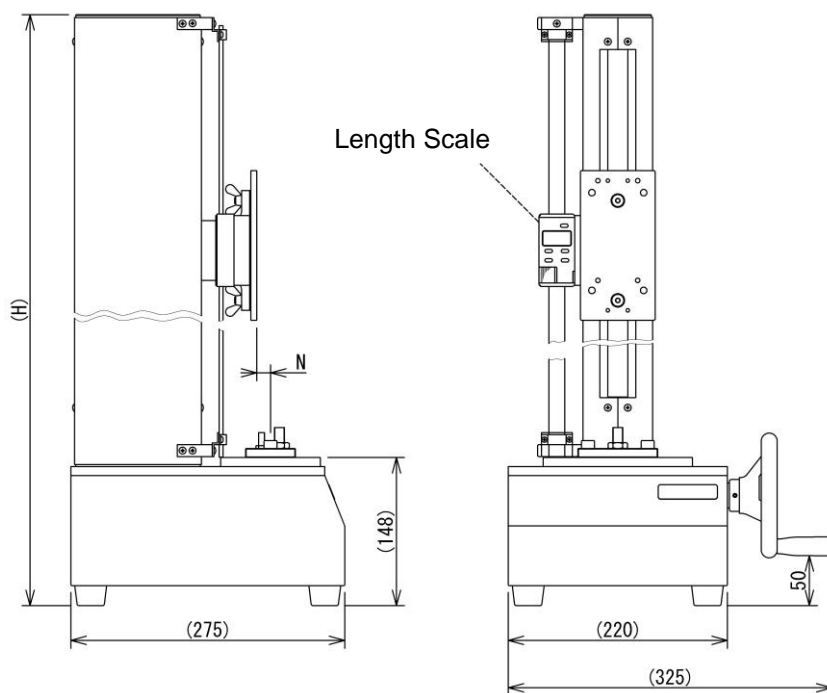
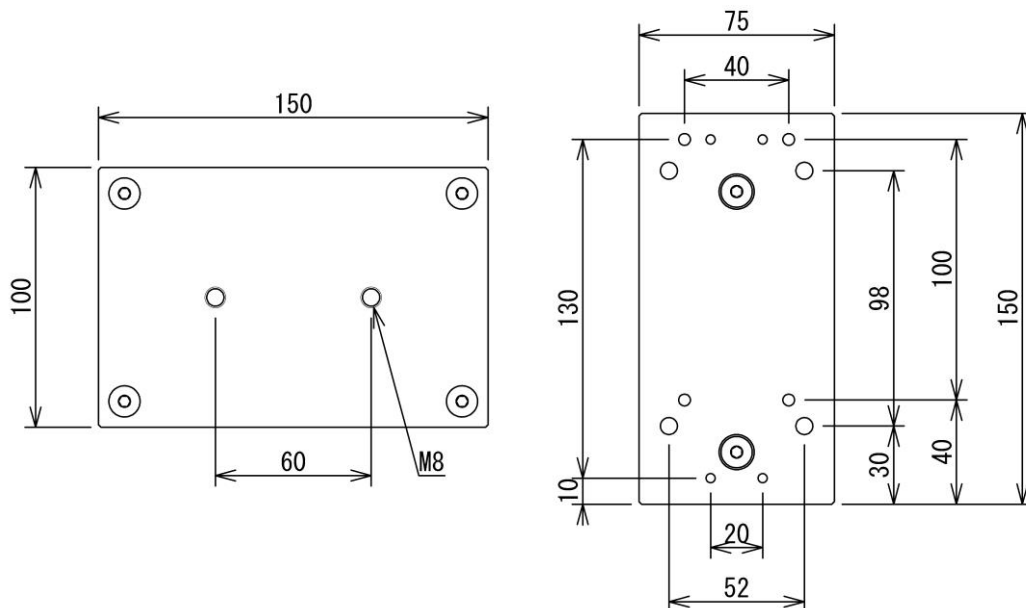


| | H | N |
|-----------------|-------|------|
| HV-500N II | 597.5 | 13.5 |
| HV-500N II -L | 797.5 | |
| HV-500N II -S | 597.5 | 12.3 |
| HV-500N II -S-L | 797.5 | |

Unit: mm

HV-1000N

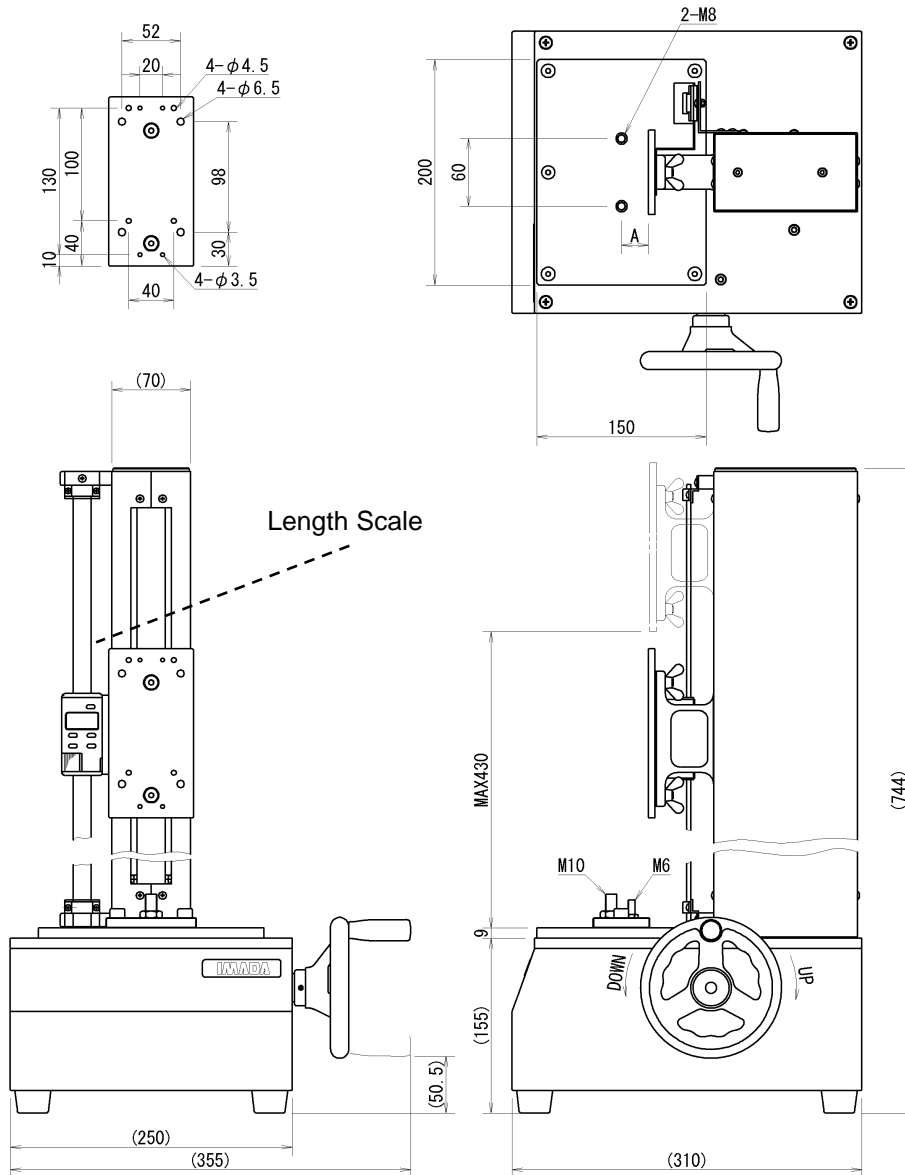
Mounting Plate for Force Gauge



| | H | N |
|--------------|-----|------|
| HV-1000N | 730 | 15 |
| HV-1000N-L | 880 | |
| HV-1000N-S | 730 | 13.8 |
| HV-1000N-S-L | 880 | |

Unit: mm

HV-3000N



Unit: mm

[Cautions]

- Information in this document is subject to change without prior notice.
- This document is product descriptions and handling precautions, and do not guarantee various characteristics or safety.
- This product is designed for force measurement purpose only.
- Do not copy and use this content without authorization.
- A force gauge (sold separately) is required to use this product.
- Do not use this product in the environments including fierce temperature changes, high temperature, high humidity, near water, dusty place

SHRADDHA IMPEX
Authorized Distributor

Email: shraddhaimpex@gmail.com / sales@shraddhaimpex.net
Web: www.shraddhaimpex.net
Contact: +919819530352/ +918591279918